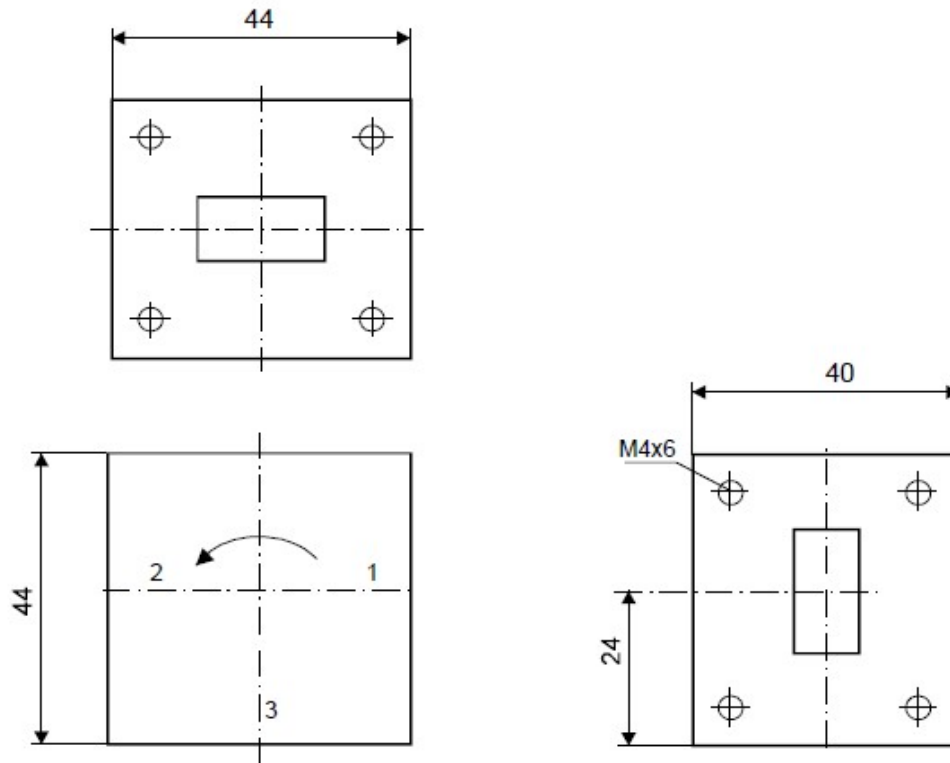


## Waveguide Circulator

CW 14.125



### Electrical Specifications

	Min	Max	Unit
Operating Frequency	13,75	14,5	GHz
Insertion Loss		0,3	dB
Isolation	20		dB
VSWR		1,22:1	
Forward Power		1	W
Reverse Power		1	W

### Mechanical Specifications

Interface/ Connectors	WR 75/	UBR 120
Direction	CCW	
Weight	200 g	
Housing Material	AlMgSi; Steel	
Surface	Conversion Coating; Ni-coated	

### Environmental Specifications

Operating Temp. Range (° C)	-10	+65
-----------------------------	-----	-----