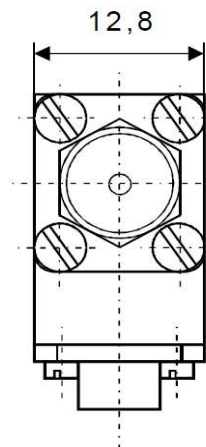
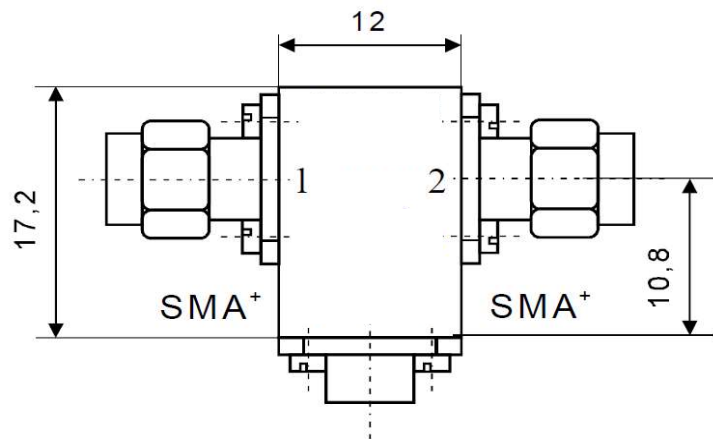


Coaxial Isolator

IC 12.5-2W bbt



Electrical Specifications

	Min	Max	Unit
Operating Frequency	10	15	GHz
Insertion Loss		0,5	dB
Isolation	20		dB
VSWR		1,29	
Forward Power		2	W
Reverse Power		2	W

Mechanical Specifications

Interface/ Connectors	SMA+
Direction	CW
Weight	25 g
Housing Material	AlMgSi; Steel
Surface	Conversion Coating; Ni-coated

Environmental Specifications

Operating Temp. Range (°C)	-30	+70
----------------------------	-----	-----