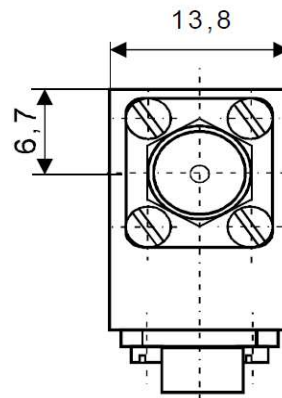
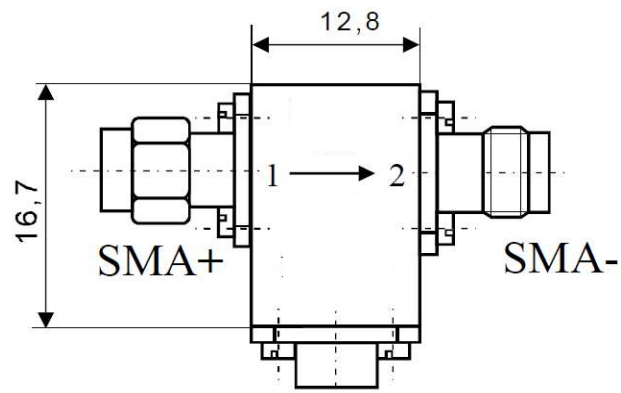


Coaxial Isolator

IC 14.5 bat



Electrical Specifications

	Min	Max	Unit
Operating Frequency	13	16	GHz
Insertion Loss		0,7	dB
Isolation	16		dB
VSWR		1,38 : 1	
Forward Power		1	W
Reverse Power		1	W

Mechanical Specifications

Interface/ Connectors	SMA +	SMA -
Direction	CW	
Weight	25 g	
Housing Material	AlMgSi; Steel	
Surface	Conversion Coating; Ni-coated	

Environmental Specifications

Operating Temp. Range (°C)	-20	+70
----------------------------	-----	-----