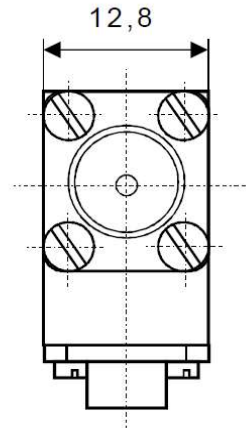
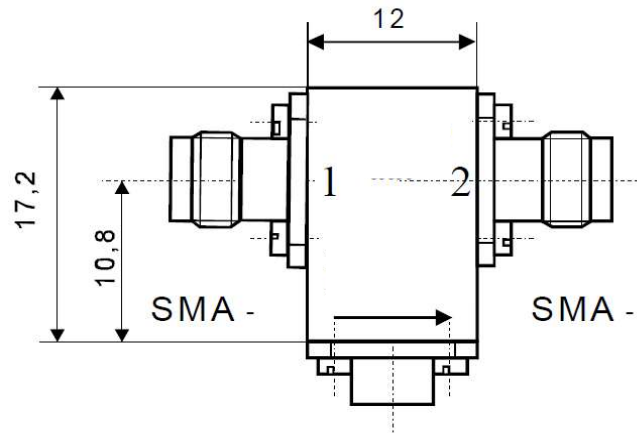


Coaxial Isolator

IC 7.49 aat



Electrical Specifications

	Min	Max	Unit
Operating Frequency	7,305	7,68	GHz
Insertion Loss		0,25	dB
Isolation	25		dB
VSWR		1,15	
Forward Power		1	W
Reverse Power		1	W

Mechanical Specifications

Interface/ Connectors	SMA-
Direction	CCW
Weight	25 g
Housing Material	AlMgSi; Steel
Surface	Conversion Coating; Ni-coated

Environmental Specifications

Operating Temp. Range (°C)	-20	+65
----------------------------	-----	-----