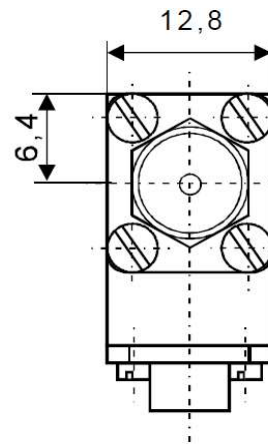
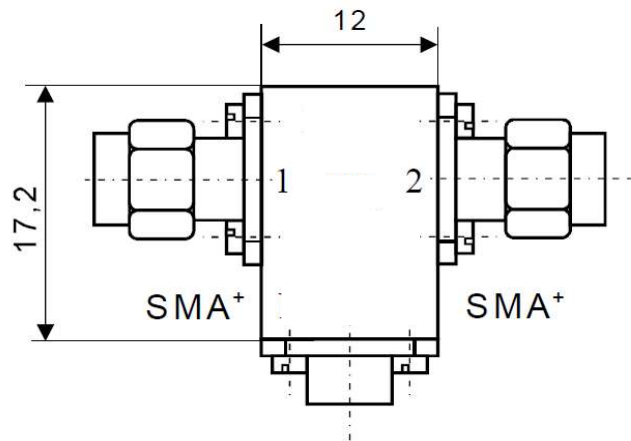


Coaxial Isolator

IC 7.5 bbt



Electrical Specifications

	Min	Max	Unit
Operating Frequency	7,1	7,9	GHz
Insertion Loss		0,3	dB
Isolation	23		dB
VSWR		1,15	
Forward Power		10	W
Reverse Power		1	W

Mechanical Specifications

Interface/ Connectors	SMA +
Direction	CW
Weight	25 g
Housing Material	AlMgSi; Steel
Surface	Conversion Coating; Ni-coated

Environmental Specifications

Operating Temp. Range (° C)	-40	+70
-----------------------------	-----	-----